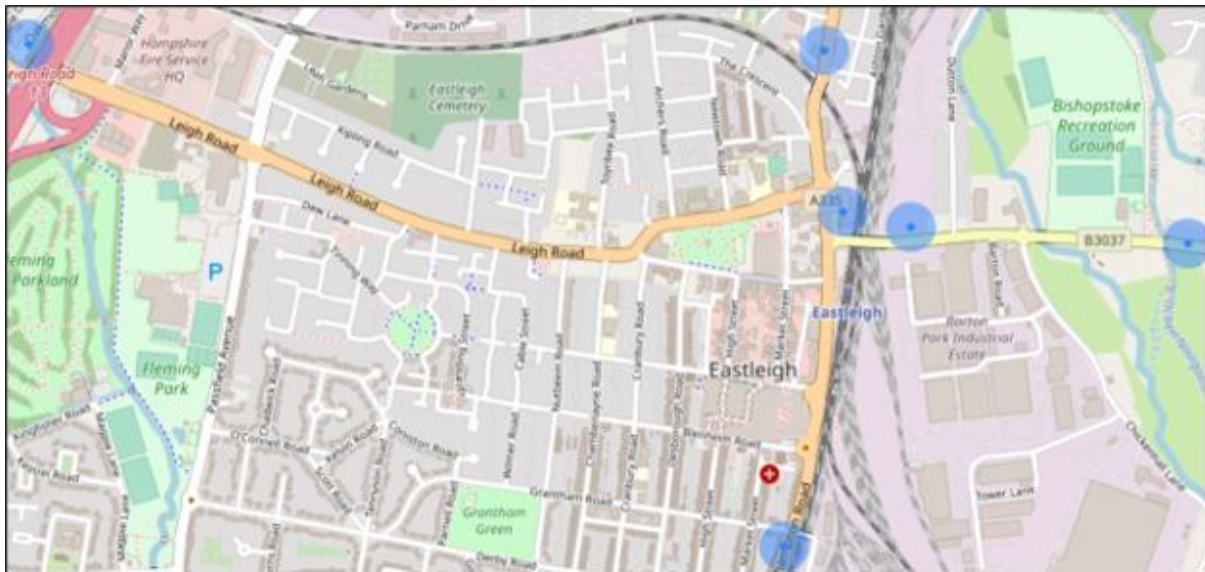
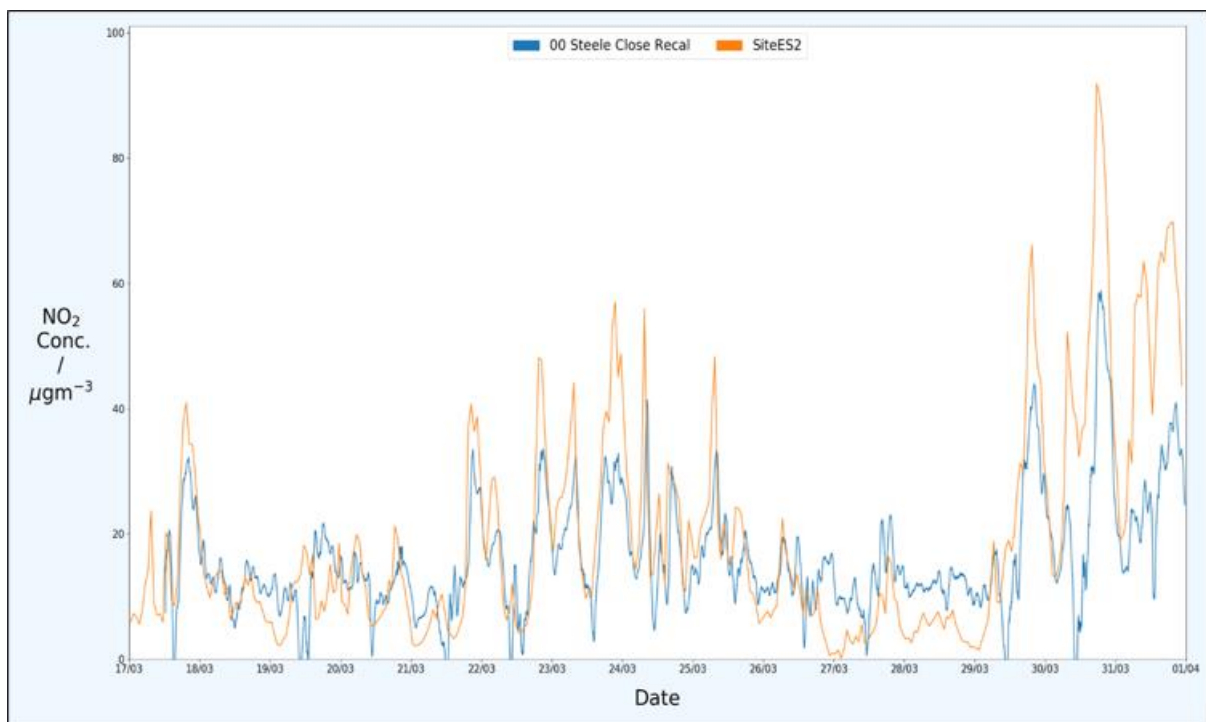


Appendix 5 – Example data from the DEFRA low cost monitoring project

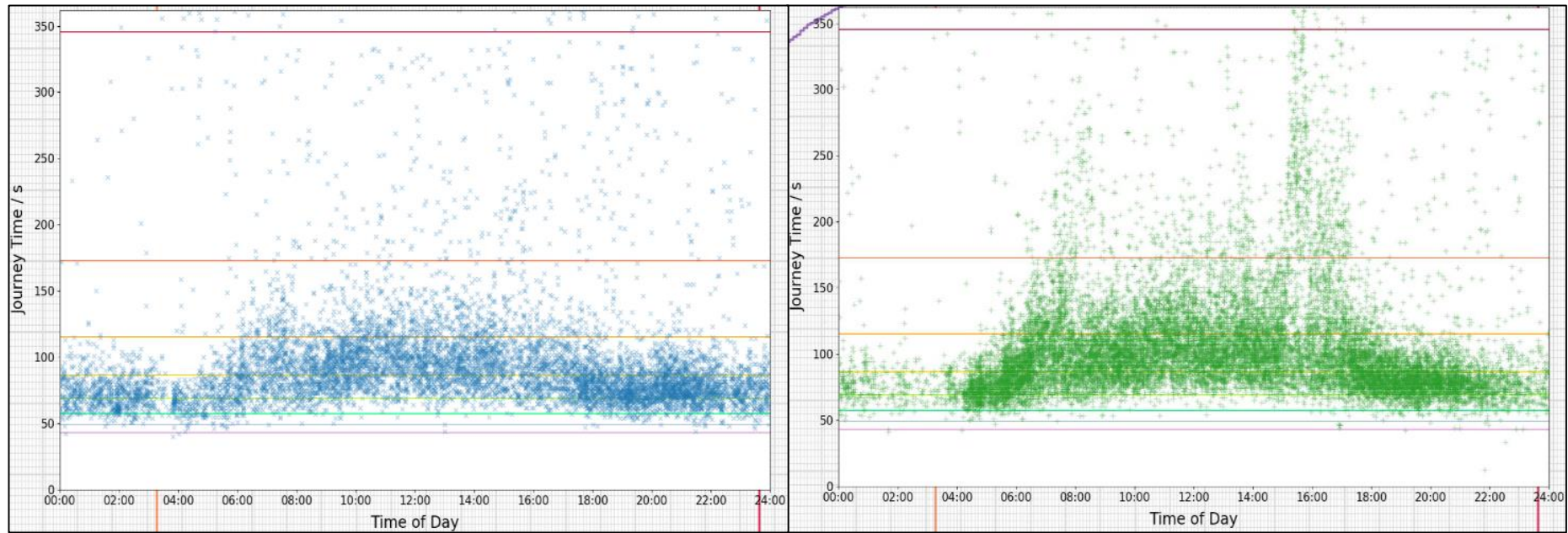
ELAC Monitoring Locations



Co-located nitrogen dioxide data from Steele Close (in orange) compared to an Airscan unit (in blue)



Journey time data, showing how a picture of congestion can be build up over the course of a day and depending on the direction of travel. The travel times are between the same two locations on Southampton Road and Wessex House, one in each direction.



Southampton Rd (southbound)

Southampton Rd (northbound)